



SHUI OF LIFE  
Feng Shui & Chinese Astrology

# Decode Your Map: A Practical Guide to Chinese Astrology



[www.shuioflife.com](http://www.shuioflife.com)



# Welcome to the World of Chinese Astrology

Chinese Astrology is not fortune-telling. It's a 3,000-year-old wisdom system designed to help you understand your true self, your patterns, and your opportunities.

It weaves together the cycles of the moon, sun, nature, and energy to create a personal map of your life. This map is built from your date, time, and place of birth and reveals the unique combination of Five Elements and 12 Zodiac Animals that shape your personality, your strengths, and your challenges.

Unlike Western Astrology, which looks to the planets, Chinese Astrology is based on cycles of nature and energy flow. Each year, month, day, and hour of your birth contributes a different layer, creating a chart as unique as your fingerprint.

Think of it as your life's instruction manual: a guide to help you live in alignment, make better choices, and stop fighting against yourself.

# The Five Elements in Chinese Astrology



Every chart is built from a balance (or imbalance) of the Five Elements. These elements are the “fuel” of your life. When balanced, they support you. When depleted or excessive, they can create stress or blockages.

## Wood 🌿

Positive: Growth, creativity, ideas, vision, leadership.

Negative when out of balance: Stubborn, easily frustrated, lacking direction, over-controlling.

## Fire 🔥

Positive: Passion, charisma, inspiration, visibility, action.

Negative when out of balance: Impulsive, scattered, burned out, attention-seeking.

## Earth 🌍

Positive: Grounding, stability, nurturing, patience, wisdom.

Negative when out of balance: Over-worry, indecisive, heavy, overly cautious.

## Metal 🔨

Positive: Clarity, structure, determination, discipline.

Negative when out of balance: Rigid, overly critical, perfectionist, emotionally distant.

## Water 💧

Positive: Wisdom, intuition, flexibility, emotional depth.

Negative when out of balance: Fearful, isolated, lack of self-confidence, overthinking.

👉 Your chart reveals which elements are strong, which are weak, and which you need more of to thrive.

# The 12 Chinese Zodiac Animals

Each of the 12 animals represents qualities, behaviors, and tendencies. But here's the key: every animal is influenced by 1-3 different elements, which makes its traits more complex than a single description.

Also, unlike the Western calendar, your Chinese zodiac year starts around February 4th (lunisolar calendar). So if you were born in January, your sign may actually belong to the previous year.

Here's a snapshot of each animal — including both strengths and challenges:

## Rat

(1924, 1936, 1948, 1960, 1972, 1984, 1996, 2008, 2020)

- Strengths: Intelligent, resourceful, adaptable, quick-witted, charming.
- Challenges: Restless, opportunistic, secretive, anxious under pressure.



## Ox

(1925, 1937, 1949, 1961, 1973, 1985, 1997, 2009, 2021)

- Strengths: Reliable, hardworking, patient, grounded, loyal.
- Challenges: Stubborn, resistant to change, overly cautious, slow to act.



# The 12 Chinese Zodiac Animals

## Tiger

(1926, 1938, 1950, 1962, 1974, 1986, 1998, 2010, 2022)

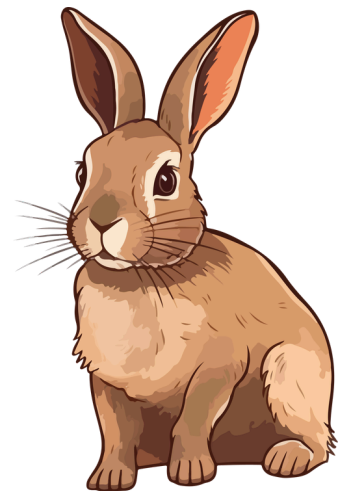
- Strengths: Brave, dynamic, confident, independent, protective.
- Challenges: Hot-headed, impulsive, unpredictable, reckless at times.



## Rabbit

(1927, 1939, 1951, 1963, 1975, 1987, 1999, 2011, 2023)

- Strengths: Gentle, kind, diplomatic, artistic, peace-loving.
- Challenges: Avoids conflict, overly sensitive, indecisive, escapist.



## Dragon

(1928, 1940, 1952, 1964, 1976, 1988, 2000, 2012, 2024)

- Strengths: Charismatic, powerful, ambitious, visionary, lucky.
- Challenges: Arrogant, overbearing, demanding, intolerant.

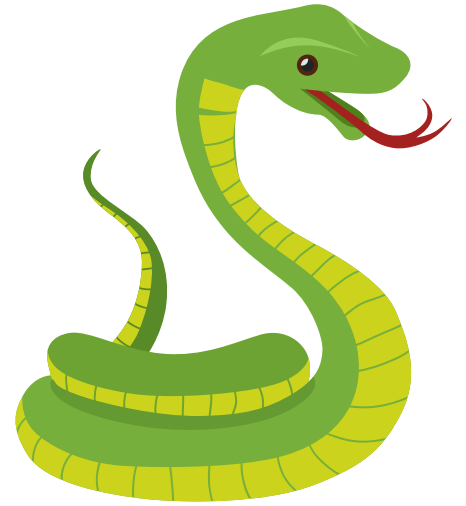


# The 12 Chinese Zodiac Animals

## Snake

(1929, 1941, 1953, 1965, 1977, 1989, 2001, 2013, 2025)

- Strengths: Wise, intuitive, elegant, strategic, mysterious.
- Challenges: Secretive, suspicious, manipulative, withdrawn.



## Horse

(1930, 1942, 1954, 1966, 1978, 1990, 2002, 2014, 2026)

- Strengths: Energetic, adventurous, independent, resilient, social.
- Challenges: Restless, impulsive, dislikes commitment, easily distracted.



## Goat/Sheep

(1931, 1943, 1955, 1967, 1979, 1991, 2003, 2015, 2027)

- Strengths: Creative, empathetic, gentle, compassionate, artistic.
- Challenges: Moody, insecure, easily influenced, avoids responsibility.



# The 12 Chinese Zodiac Animals

## Monkey

- (1932, 1944, 1956, 1968, 1980, 1992, 2004, 2016, 2028)
- Strengths: Clever, curious, playful, innovative, witty.
- Challenges: Mischievous, unreliable, manipulative, scattered.



## Rooster

(1933, 1945, 1957, 1969, 1981, 1993, 2005, 2017, 2029)

- Strengths: Honest, confident, organized, detail-oriented, hardworking.
- Challenges: Perfectionist, critical, blunt, rigid.



## Dog

(1934, 1946, 1958, 1970, 1982, 1994, 2006, 2018, 2030)

- Strengths: Loyal, protective, kind, trustworthy, justice-driven.
- Challenges: Pessimistic, stubborn, anxious, overly serious.

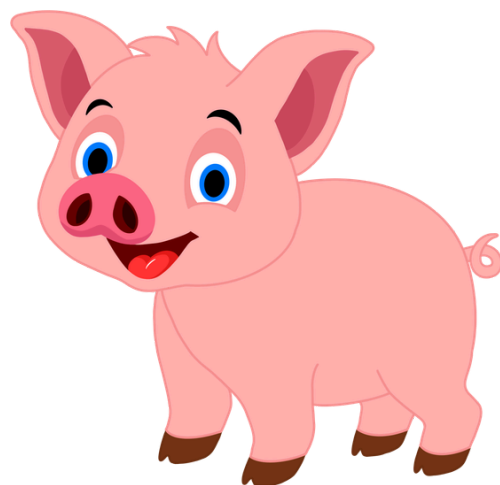


# The 12 Chinese Zodiac Animals

## Pig

(1935, 1947, 1959, 1971, 1983, 1995, 2007,  
2019, 2031)

- Strengths: Generous, warm-hearted, honest, easy-going, sincere.
- Challenges: Naïve, indulgent, passive, avoids confrontation.



## How Chinese Astrology Helps You?

Chinese Astrology isn't just "fun" or "interesting," it's a practical tool for real-life clarity.

Get unstuck in your career or business by knowing when to push and when to pause.

Heal and improve relationships by understanding your natural communication style and love language.

Attract abundance by balancing your elements and learning your money patterns.

Break old cycles by recognizing repeating patterns in your chart. Stop second-guessing yourself and move forward with confidence.



# About Me

**I'M LILACH ADONI, A CERTIFIED LIFE COACH SINCE 2012, AND SINCE 2021, I'VE BEEN GUIDING CLIENTS USING CHINESE ASTROLOGY AND FENG SHUI.**

My passion is blending ancient wisdom with modern coaching. I don't just read your chart, I show you how to use it in daily life. That means practical steps, emotional healing, and energy alignment that actually create change.

Through my work (and my book *Breaking Chains*), I've helped countless people recognize their patterns, reclaim their energy, and finally align with who they truly are.

I combine my expertise in Chinese astrology, Feng Shui, and life coaching to provide personalized guidance tailored to your unique life map. Whether you're feeling stuck, seeking clarity, or striving to align with your life's purpose, I'm here to help you unlock the doors to a more fulfilling and abundant life.



## COMMUNICATION

### CONTACT DETAILS

732-261-7235

### WEBSITE

[www.shuioflife.com](http://www.shuioflife.com)

### SOCIAL MEDIA

[@lilachadoni](https://www.instagram.com/lilachadoni)

[@shuioflife](https://www.instagram.com/shuioflife)



# Schedule Your Free Consultation

If there's an area of your life that feels stuck or heavy,

Chinese astrology can offer clarity.

I'm offering a **Free 10-minute** birth map (30\$ value) consultation to help you understand

What part of your chart needs attention right now,

What is the next step that can bring greater ease?

This isn't a full reading.

It's a moment of awareness, a mirror.

If you feel called, send me a **WhatsApp message** to book your free call.

You don't have to figure this out alone.

732-261-7235

SHUIOFLIFE@GMAIL.COM





# Testimonials

CLIENT

I had a meeting with Shui of Life back in September/October 2023 and I was blown away. She touched on so many aspects of my life, my children, their personalities, what makes them tick and she was on the money! If you are stuck, need motivation or direction, I highly recommend setting up your appointment soon as they book up real quickly.

I went back for a workshop this March 2025. We are in a new era -how do we navigate it? What to expect? What opportunities lay ahead? Contact Lilach and find out for yourself. You will need this clarity!!

Dena B.

Wow! Not enough words to articulate how incredible attending Lilach's latest seminar was! She truly is a master of her craft, from the way she was able to captivate an audience to the way she was an expert on her knowledge of Chinese Astrology. A night where I found myself disappointed when the seminar concluded! I have been feeling rather stuck lately in some areas of my life, and it all became crystal clear when I had my specified chart in my hand and she was thoroughly explaining every element on it and what it meant. By the end of the night, I was able to pinpoint my strengths and weaknesses and use the chart Lilach provided us as a guided tool to help me navigate my life! If you're someone feeling stuck in certain pivotal areas, or you just want more clarity of what your purpose is, Lilach from Shui of Life is the person to go to!

Rosanna C.



Lilach is a passion worker , she delivers her readings from the heart and is very invested in getting it right. I had 2 readings last year and so far I am very impressed. Great example Lilach shared with me that I would be working with kids in this year 2024 , I didn't have that agenda in 2023 when she read my chart , I'm starting a children's yoga program at my gym next month. So I'm actually super impressed and a total Lilach devotee.

Rada B.

To read more reviews, click the link below:

[Shui of Life, LLC](#)